



DRC 1E

Reliable driving connector for heald frames

GROZ-BECKERT

Groz-Beckert KG

Parkweg 2, 72458 Albstadt, Germany
Phone +49 7431 10-0, Fax +49 7431 10-2777
contact-weaving@groz-beckert.com
www.groz-beckert.com

The DRC 1E driving connector – developed for current Groz-Beckert heald frames

As a bridge element between the heald frame and machine driving system components, driving connectors are subject to high levels of stress. Therefore, Groz-Beckert developed the DRC 1E for improved performance and durability.

High-quality, wear-resistant materials insure reliable, durable function with minimal maintenance requirements.



DRC 1E stud



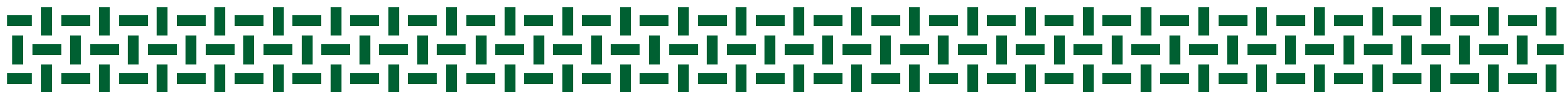
DRC 1E link



DRC 1E bronze execution



DRC 1E composite execution



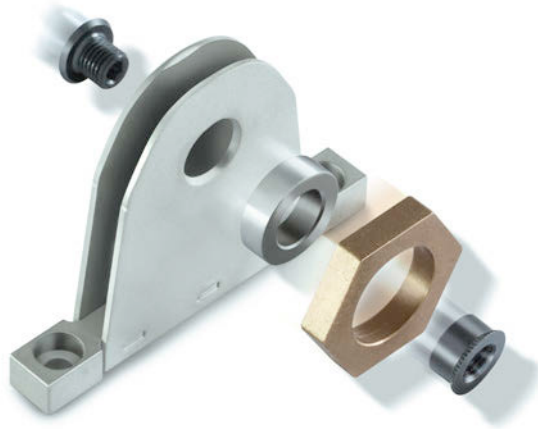
Special features of the DRC 1E

In the DRC 1E execution, the hexagonal bushing of the driving connector is easy to replace in the event of wear due to its fixation with a hexagonal socket head screw.

The DRC 1E driving connector – bronze

Benefits:

- Self-lubricating
- Reduced maintenance requirements
- High-quality material
- High wear resistance



DRC 1E links and studs

The DRC 1E driving connector – composite

Benefits:

- Higher wear resistance
- Good stock characteristics
- Very good operational performance with minimal lubrication



DRC 1E links and studs