



Special application needles SAN® 10 and SAN® 10 XS

For the gentle processing of fine and finest fabrics

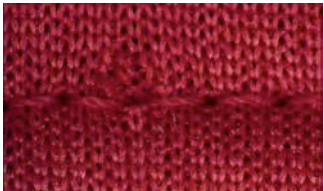
GROZ-BECKERT

Groz-Beckert KG

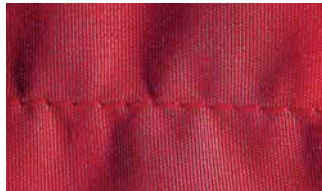
Parkweg 2, 72458 Albstadt, Germany
Phone +49 7431 10-0, Fax +49 7431 10-2777
contact-sewing@groz-beckert.com
www.groz-beckert.com

Challenges when processing fine knitted and woven fabrics

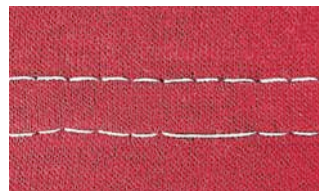
The processing of fine material is often very critical: If the needle is too thick, material damages or seam puckering may arise. If the needle is too thin, it can lead to skipped stitches and thread or needle breakage.



Material damage



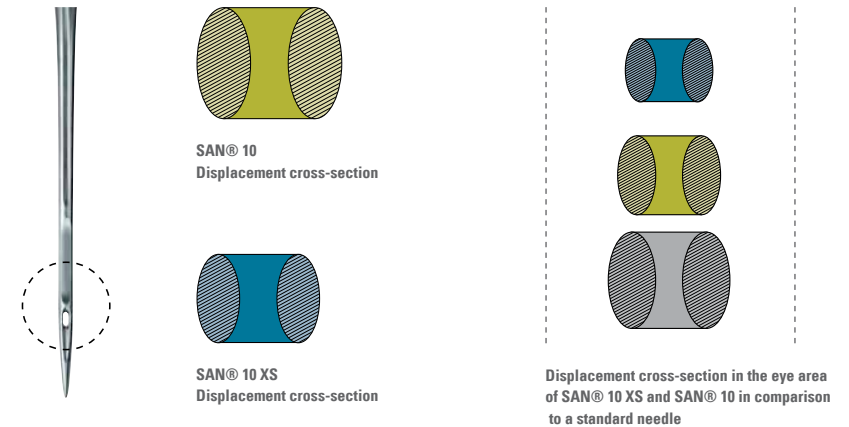
Seam puckering



Skipped stitches

Special application needle SAN® 10: Gentle and stable

The special application needle SAN® 10 combines the requirements for protection of the material and needle stability. Its slim design results in a reduced cross-section in the eye area, reducing the stress on the material as the needle penetrates it. At the same time, the special geometry in the blade area offers a sufficient needle stability in order to avoid needle breakages.



Special application needle SAN® 10 XS: Even more gentle on the material

For the processing of ultra-fine fabrics and materials that are extremely difficult to sew, the newly-conceived SAN® 10 XS offers an even higher level of material protection. The cylindrical blade enables a gentle penetration of the material by the needle, which reduces material damage. On the other hand, the extremely slim design of the SAN® XS reduces its needle stability. For this reason, it is recommended to use the SAN® 10 XS for applications where the main focus lies on the avoidance of material damage. Additionally, it is recommended to use the thinnest possible sewing thread.



The advantages of the special application needle SAN® 10:

- Improvement of the seam quality in conjunction with material protection
- Avoidance of skipped stitches
- Reduction of needle breakage
- Possibility to use thicker sewing threads without increasing the needle size (bigger needle eye)



The advantages of the special application needle SAN® 10 XS:

- Highest possible level of material protection
- Thinnest possible stitch holes



Product range SAN® 10 and SAN® 10 XS

Needle system	Size (Nm)						
	55	60	65	70	75	80	90
DBx1 SAN® 10 FFG	•	•	•	•	•	•	
DBx1 SAN® 10 R	•	•	•				
DBx1 SAN® 10 XS FFG		•	•	•			
B 27 SAN® 10 FFG	•	•	•	•	•	•	
B 27 SAN® 10 FG					•		
B 27 SAN® 10 XS FFG		•	•	•			
62 x 57 SAN® 10 FFG				•		•	
B 63 SAN® 10 FFG	•	•	•	•	•	•	•
B 63 SAN® 10 FG				•			
UY 118 SAN® 10 FFG		•	•		•	•	
UY 128 SAN® 10 FFG	•	•	•		•	•	
UY 128 SAN® 10 RG	•						
UY 128 SAN® 10 FG		•			•		

Groz-Beckert recommends the application of the SAN® 10 for:

- Materials that are easily damaged, especially fine knitted and woven fabrics*
- Sensitive material that can only be processed at reduced sewing speed and with very thin needles
- The use of bulk threads and elastic threads

Groz-Beckert recommends the application of the SAN® 10 XS for:

- Material with an extremely high tendency to get damaged, especially fine and finest knitted, warped and woven fabrics*
- Extremely sensitive material that can only be processed at significantly reduced sewing speed and with the thinnest of needles
- Material that tends to show big stitch holes

*1 The sewability of a fabric is also affected by its quality and finishing as well as by the room climate.

Needle system	Size (Nm)						
	55	60	65	70	75	80	90
UY 128 KK SAN® 10 FFG			•	•			
UY 128 SAN® 10 XS FFG		•	•	•			
134 SAN® 10 R	•						
134 SAN® 10 FFG	•	•	•	•	•	•	
134 SAN® 10 SKL			•	•	•		
134 SAN® 10 XS FFG		•	•	•			
134-35 SAN® 10 FFG			•	•	•		
751 SAN® 10 FFG		•					
MY 1014 H SAN® 10 FFG			•	•	•		
MY 1014 H SAN® 10 XS FFG		•	•				